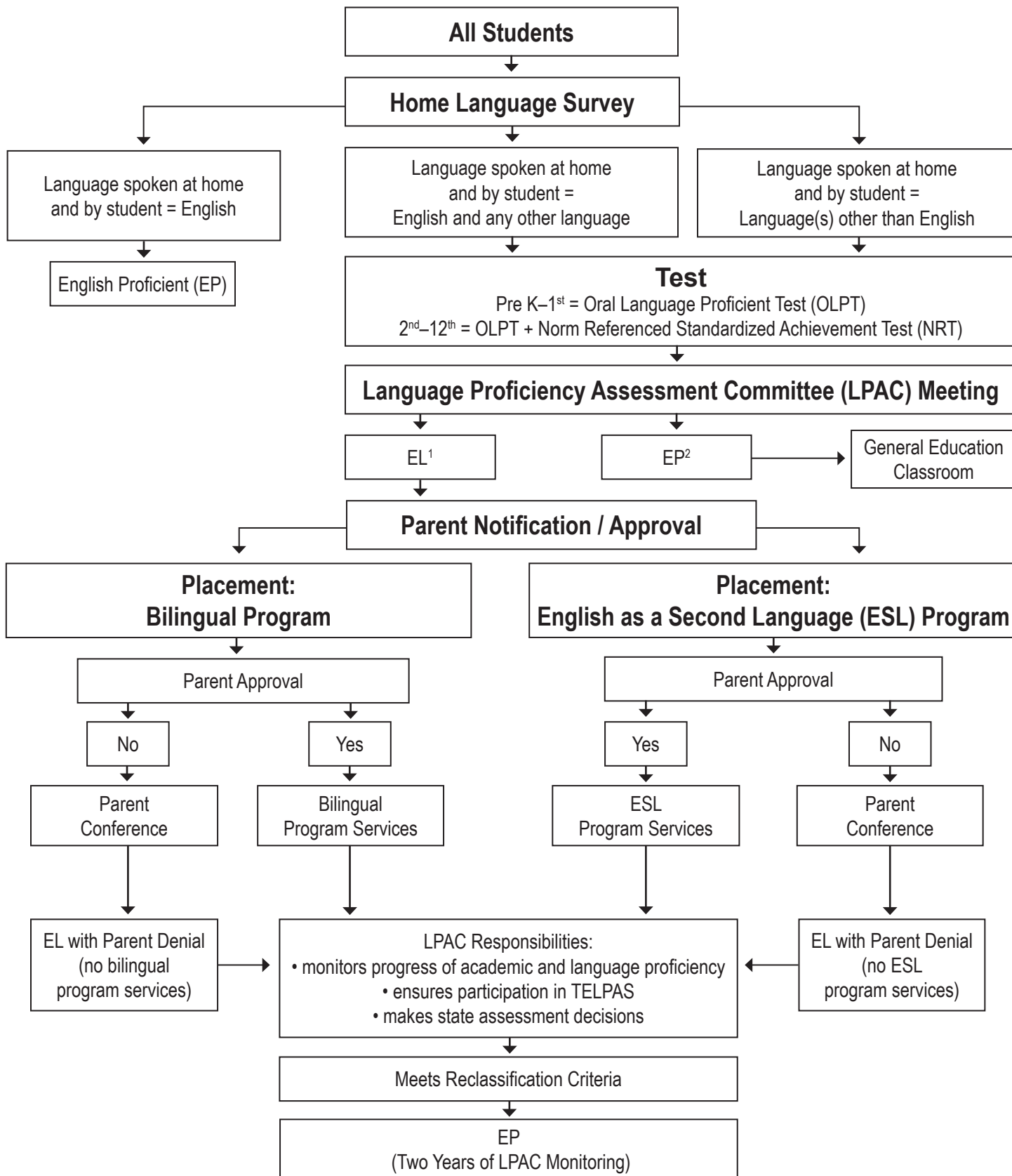


# English Learner (EL) Identification/Reclassification Flowchart



**<sup>1</sup>Criteria for EL identification:**

Pre-K – 1<sup>st</sup> OLPT below English proficient level = EL  
 2<sup>nd</sup> – 12<sup>th</sup> OLPT below English proficient level and/or NRT at grade level for Reading and/or English language arts below 40<sup>th</sup> percentile = EL

**<sup>2</sup>Criteria for non-EL identification:**

Pre-K – 1<sup>st</sup> OLPT at or above English proficient level = non-EL  
 2<sup>nd</sup> – 12<sup>th</sup> OLPT at or above English proficient level and NRT at grade level for Reading and English language arts at or above 40<sup>th</sup> percentile = non-EL

The terms Limited English Proficient (LEP) and English learner (EL) are used interchangeably. The term LEP is still used for data collection in the Public Education Information Management Systems (PEIMS).